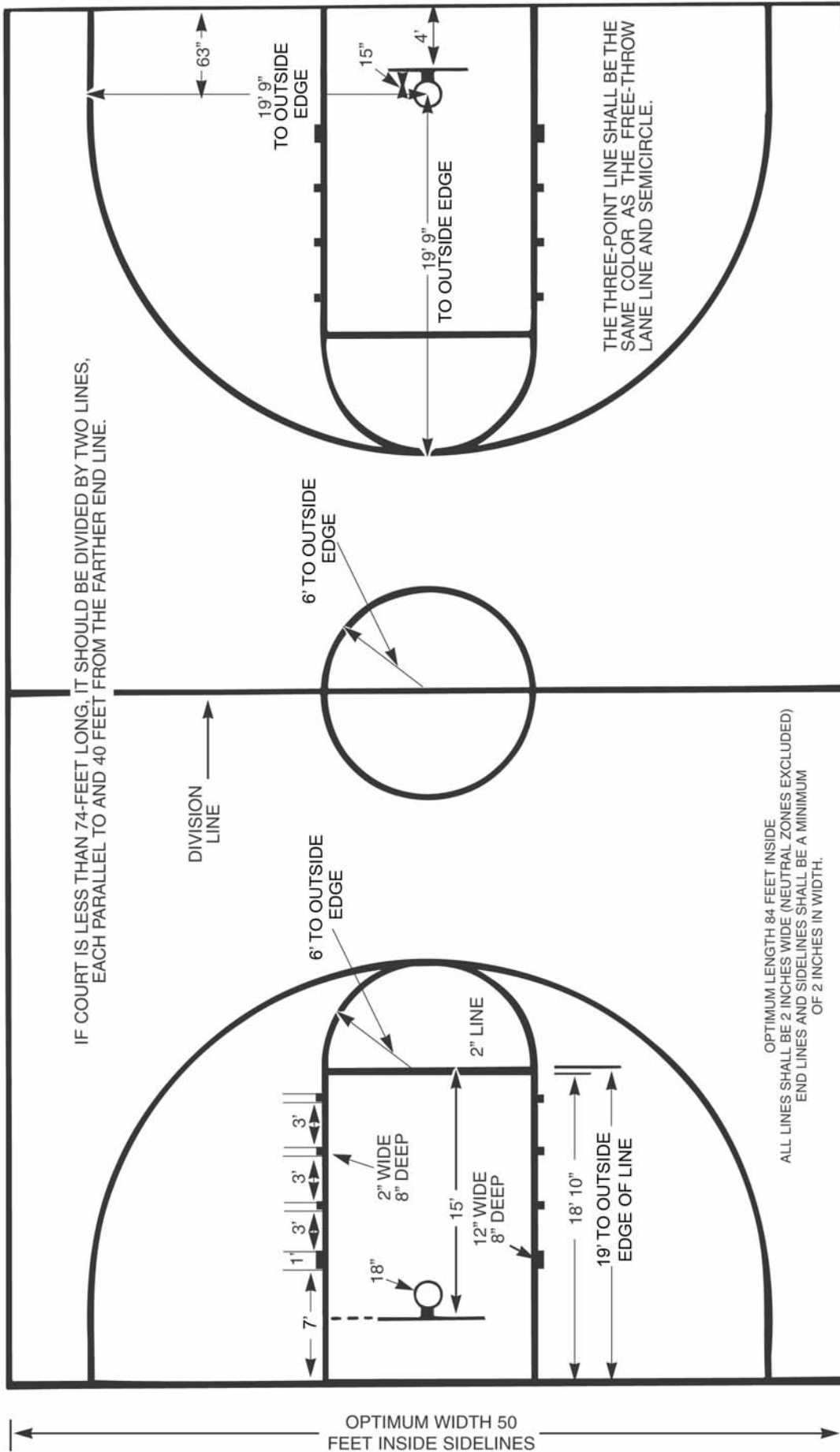


BASKETBALL COURT DIAGRAM

(See Rule 1-13 for location and size of optional coaching box)



Left End Shows Rectangular Backboard 72-Inches Wide

MINIMUM OF 3 FEET

Preferably 10 feet of unobstructed space outside. If impossible to provide 3 feet, a narrow broken 1-inch line should be marked inside the court parallel with and 3 feet inside the boundary.

Right End Shows Fan Backboard 54-Inches Wide